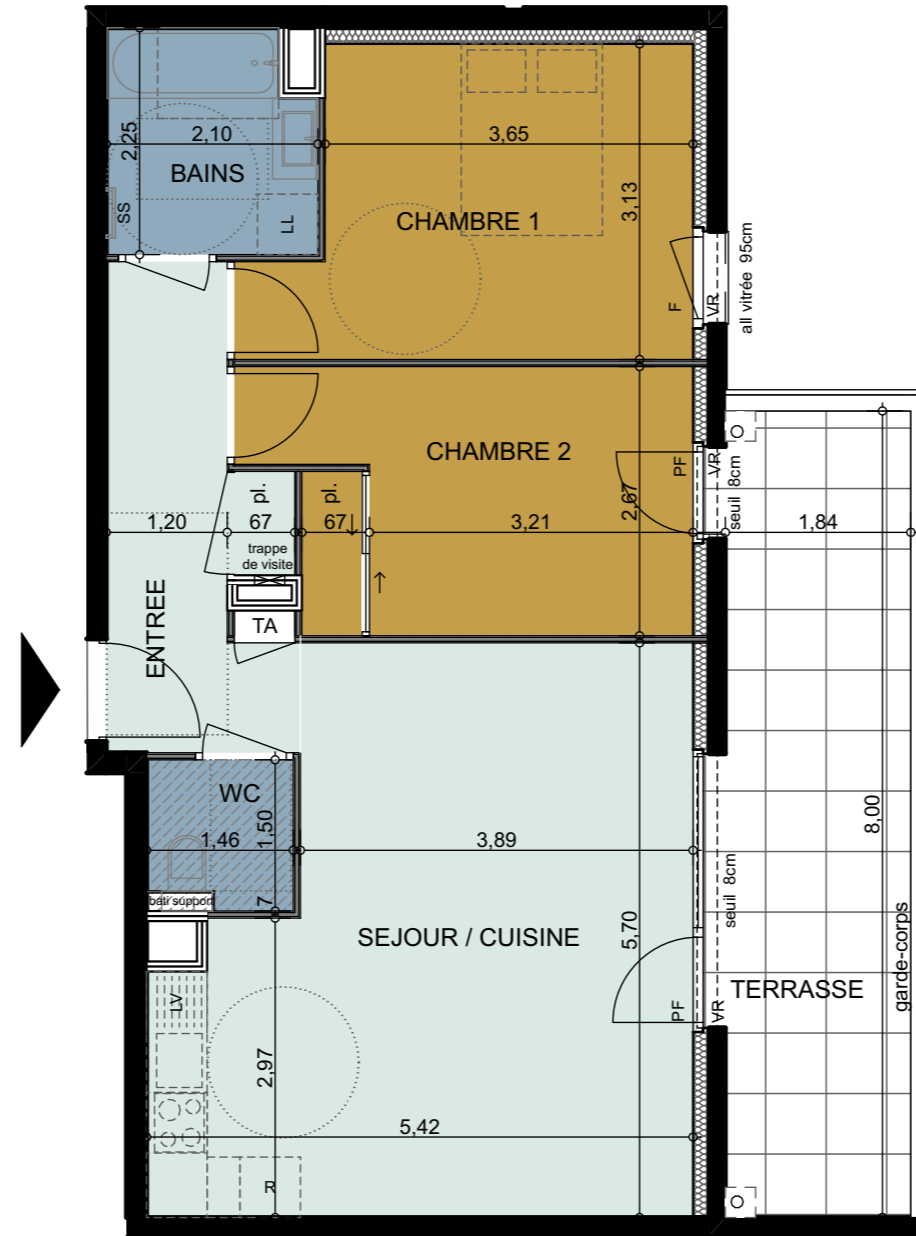
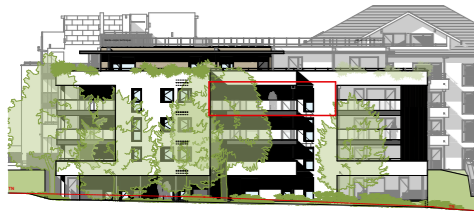
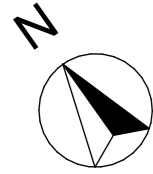







PLAN DE COMMERCIALISATION

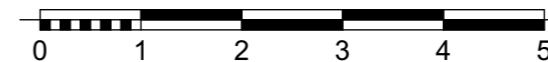
Date d'édition: 20/03/2026



- Légende:**
 PF: Porte Fenêtre
 PC : Porte coulissante
 F: Fenêtre
 VR: Volet Roulant
 LL: Lave linge
 LV: Lave vaisselle
 R: Réfrigérateur
 TA: Tableau d'abonné (coffret électrique)
 SS: Sèche Serviettes
 pl. : Placard

-  Faux plafond ou Soffite
-  Cloison
-  Gaine Technique
-  Mur porteur isolé
-  Mur porteur

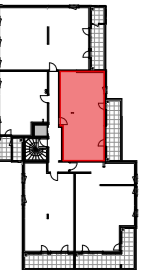
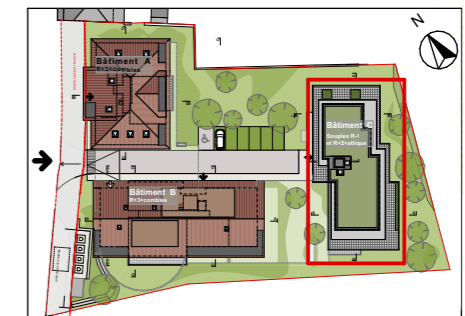
Echelle: 1/75^{ème}



Bâtiment	N°	Type	Niveau
C	C203	T3	R+2

Pièces	Surface habitable
BAINS	4,5
CHAMBRE 1	12,3
CHAMBRE 2	11,0
ENTREE	7,3
SEJOUR / CUISINE	26,6
WC	2,0
TOTAL	63,7 m²

Surfaces Annexes	Surface
TERRASSE	14,7
TOTAL ANNEXES	14,7 m²



PROMOTION IMMOBILIERE
 Edifim Anecy Léman
 6 Avenue du Pont Neuf
 Cran Gevrier
 04 50 33 56 63 | edifim.fr



SOGIMM
 33 ter Av de France
 74000 ANNECY
 04 50 57 76 85